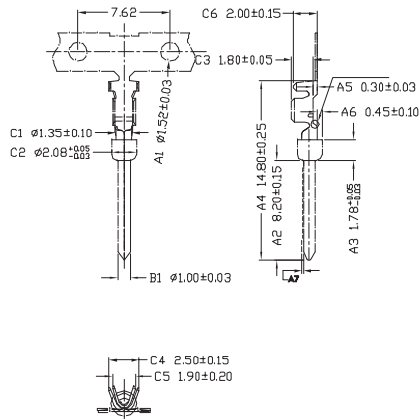
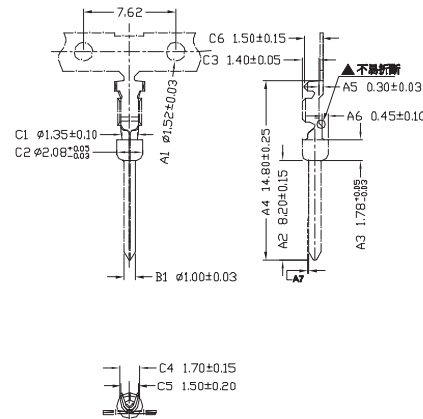


D_{sub} - terminal - contact stamped

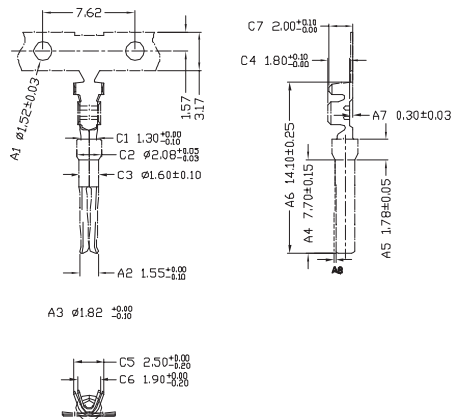
CRIMP High feet male terminal



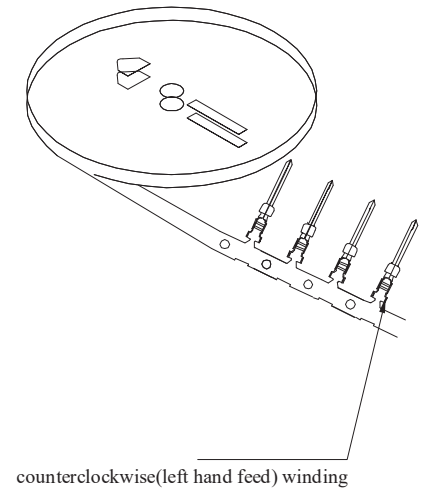
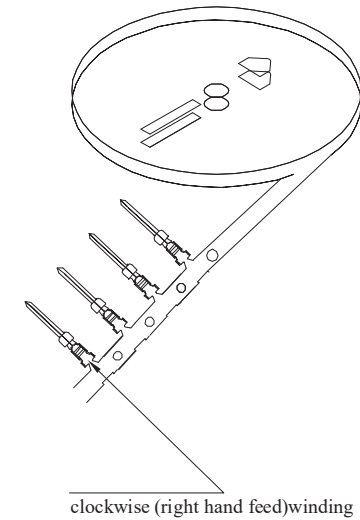
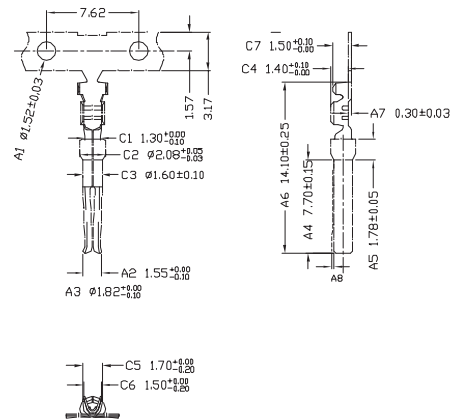
CRIMP Low feet male terminal



CRIMP High feet female terminal



CRIMP Low feet female terminal



NOTE:

- 1.Crimp, counterclockwise(left hand feed) winding, clockwise. (right hand feed)winding.
2. Use the white foam rubber 030 stick(hengfeng brand) to gather the acetic acid ethylene lotion styrafoam and cardboard.
- 3.No transparent tape is allowed to upper and lower cardboard.

FAMILY	MODEL	TYPE	AWG
DS	C	M [male]	1M [AWG 20-24]
		F [female]	2M [AWG 24-28]



euro-conn



UNITS: mm

SHEET SIZE: ISO A4

SCALE:---

> 0 ~ 3

> 3 ~ 18

> 18 ~ 50

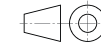
> 50 ~ 120

± 0.12

± 0.15

± 0.3

± 0.5



First angle projection

DSCX