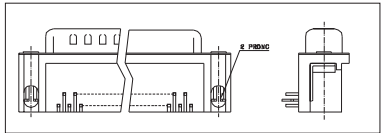
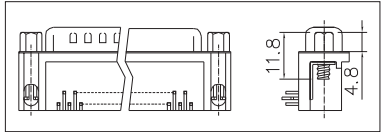


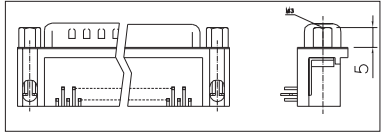
CONSULT SALES OR FACTORY FOR OTHER MOUNTING STYLE OPTIONS



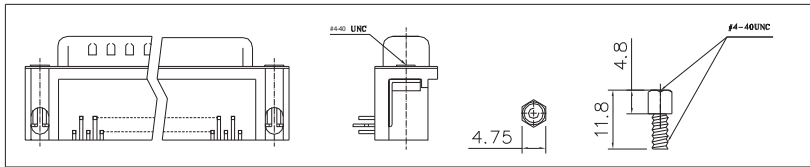
HH



FS



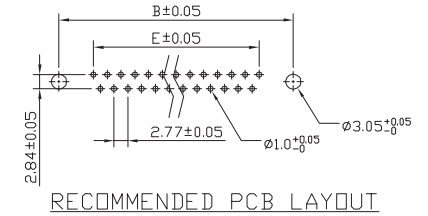
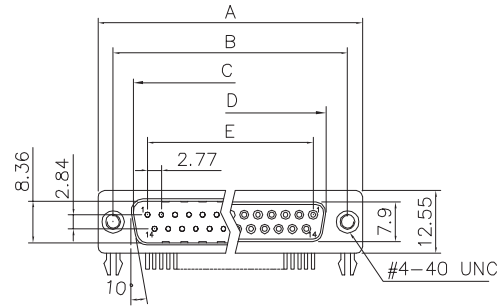
RM



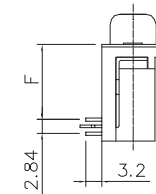
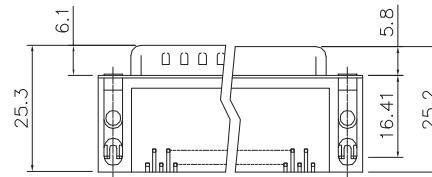
RF

Dimensions

Positions	A	B	C	D	E
9	30.81	24.99	16.92	16.33	11.08
15	39.20	33.30	25.25	24.70	19.39
25	53.05	47.04	38.96	38.40	33.24
37	69.40	63.50	55.42	54.80	49.86



RECOMMENDED PCB LAYOUT



F
8.1
10.4
14.8

Product Specification

Material

Insulator : Glass-Filled Thermoplastic PBT, UL94V-0  
 Contact : Brass  
 Shell : Steel, 100u" Tin Over 50u" min Copper  
 Clinch Nut : Brass, Nickel Plated.  
 Boardlock : Brass, Tin Plated.  
 Screwlock : Brass, Nickel Plated.

Electrical

Contact Resistance : 20 milliohms  
 Max at 1 AMP DC.  
 Insulation Resistance : 1000  
 megohms at 500 VDC  
 Dielectric Withstanding Voltage :  
 1000 VAC/rms 60Hz for 1 minute  
 Current Rating : 3 AMP  
 Voltage Rating : 250 VAC/rms 60Hz

General description of ordering code

FAMILY	MODEL	CONTACT TYPE	N° PIN	TYPE	CLIP PLATING	PITCH - F -	PCB OPTIONS	ACCESSORIES
DS	D	S	09	M [male]	F [flash gold]	1 [pitch mm 8,10]	0 [Without Fork]	HH [clear hole]
			15	F [female]	G [gold 15u"]	2 [pitch mm 10,40]	1 [With Fork]	FS [screwlocks 4/40]
			25		D [gold 30u"]	3 [pitch mm 14,8]		RM [rivet + screws 3MA]
			37					RF [riveted 4/40]

Approvals



E356435



euro-conn



UNITS: mm

SHEET SIZE: ISO A4

SCALE:---

> 0 ~ 3

> 3 ~ 18

> 18 ~ 50

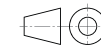
> 50 ~ 120

± 0.12

± 0.15

± 0.3

± 0.5



First angle projection

D-SUB