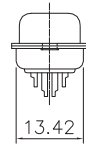
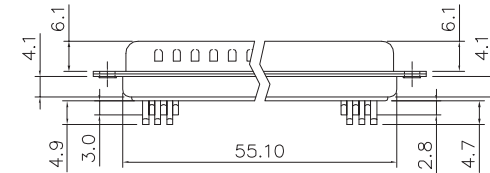
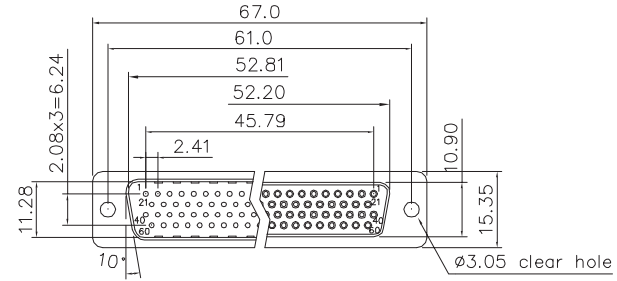
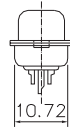
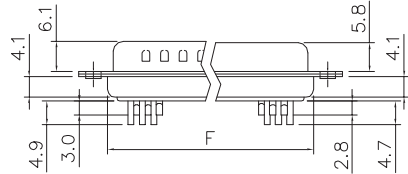
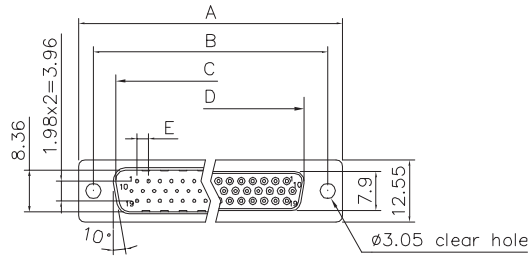


D_sub HD - wire solder- contact stamped

CONSULT SALES OR FACTORY FOR OTHER MOUNTING STYLE OPTIONS

Dimensions

POSITIONS	A	B	C	D	E	F
15	30.81	24.99	16.92	16.33	2.29	19.20
26	39.20	33.30	25.25	24.70	2.29	27.70
44	53.05	47.04	38.96	38.40	2.29	41.10
62	69.40	63.50	55.42	54.80	2.41	57.30



Product Specification

Material

Insulator : Glass-Filled Thermoplastic PBT, UL94V-0
 Contact : Brass
 Shell : Steel, 100u" Tin Over 50u" min Copper
 Clinch Nut : Brass, Nickel Plated
 Screwlock : Brass, Nickel Plated

Electrical

Contact Resistance : 20 milliohms
 Max at 1 AMP DC.
 Insulation Resistance : 1000
 megohms at 500 VDC
 Dielectric Withstanding Voltage :
 500 VAC/rms 60Hz for 1 minute
 Current Rating : 3 AMP
 Voltage Rating : 250 VAC/rms 60Hz

General description of ordering code

FAMILY	MODEL	CONTACT TYPE	N° PIN	TYPE	CLIP PLATING	ACCESSORIES
DH	B	S	15	M [male]	F [flash gold]	HH [clear hole, 1 mm]
			26	F [female]	G [gold 15u"]	
			44		D [gold 30u"]	
			62			
			78			

Approvals



E356435



euro-conn



UNITS: mm

SHEET SIZE: ISO A4

SCALE:---

> 0 ~ 3

> 3 ~ 18

> 18 ~ 50

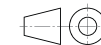
> 50 ~ 120

± 0.12

± 0.15

± 0.3

± 0.5



First angle projection

DHBS