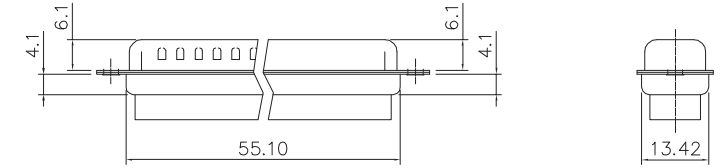
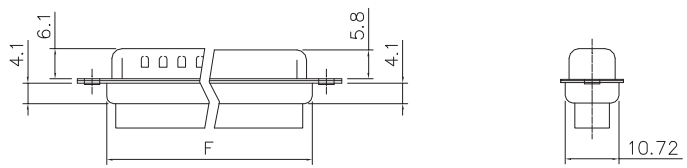
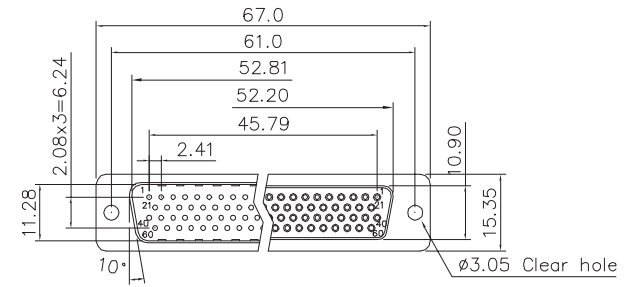
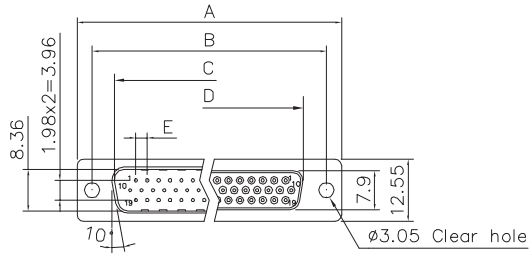


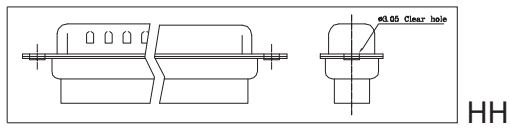
D_sub HD - crimp housing- contact stamped

CONSULT SALES OR FACTORY FOR OTHER MOUNTING STYLE OPTIONS

POSITIONS	A	B	C	D	E	F
15	30.81	24.99	16.92	16.33	2.29	19.20
26	39.20	33.30	25.25	24.70	2.29	27.70
44	53.05	47.04	38.96	38.40	2.29	41.10
62	69.40	63.50	55.42	54.80	2.41	57.30



78 Positions



FAMILY	MODEL	CONTACT TYPE	N° PIN	TYPE	CLIP PLATING	ACCESSORIES
DH	C	S	15	M [male]	H [void]	HH [clear hole, 1 mm]
			26	F [female]		
			44			
			62			
			78			

Product Specification

Material
 Insulator :Glass-Filled Thermoplastic PBT,UL94V-0 rated
 Shell : Steel, 100u" Tin Over 50u" min Copper
 Clinch Nut: Brass, 100u" min Nickel Plated.
 Screwlock :Brass, 100u" min Nickel Plated.

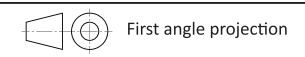
Electrical
 Insulation Resistance :1000 megohms at 500 VDC
 Dielectric Withstanding Voltage : 1000 VAC/rms 60Hz for 1 minute

Approvals

E356435



UNITS: mm	SHEET SIZE: ISO A4		SCALE:---
> 0 ~ 3	> 3 ~ 18	> 18 ~ 50	> 50 ~ 120
± 0.12	± 0.15	± 0.3	± 0.5



DHCS