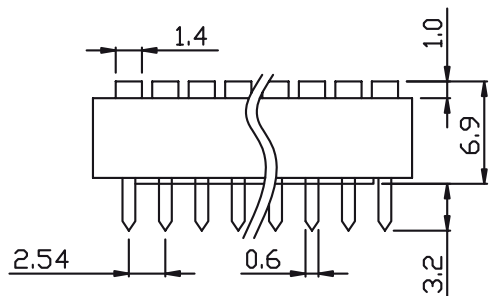
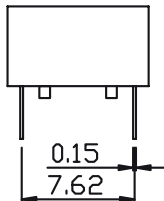
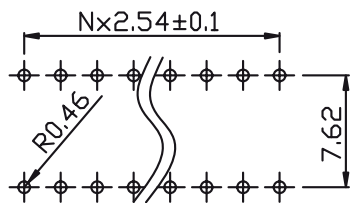
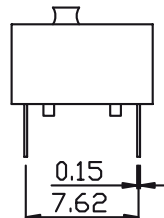


DSR Type



DS Type

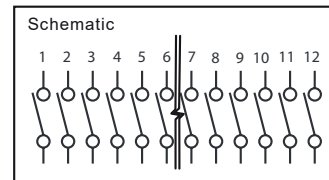


PCB LAYOUT

SPECIFICATIONS

Mechanical life: 2000 operations per switch
 Operation Force : ≤9.8N max.
 Stroke:2.0mm
 Operation Temp:-20°C~+70°C
 Electrical life: 2000 operations per switch-24 VDC, 25mA
 Contact Resistance: 50m max. at initial
 Non-Switching Rating: 100mA, 50VDC
 Switching Rating: 25mA, 24VDC
 Circuit: Single pole single throw

Soldering and Cleaning Processes
 Keep all switch contacts in their "OFF" position for all operations



No. Pos.	A
1	4.10
2	6.64
3	9.18
4	11.72
5	14.26
6	16.80
7	19.34
8	21.88
9	24.42
10	26.96
12	32.04

General description of ordering code

FAMILY	POSITIONS	TYPE	COLOR	OPTION	PACKAGE
EC7	XX	DS	R [red]	0 [sealed]	T [tube]
		DSR	B [blue]	1 [no sealed]	



euro-conn



UNITS: mm

SHEET SIZE: ISO A4

SCALE: ----

> 0 ~ 3

> 3 ~ 18

> 18 ~ 50

> 50 ~ 120

± 0.12

± 0.15

± 0.3

± 0.5

! I prodotti e le caratteristiche possono cambiare senza preavviso.
 The products and their features may change without notice.

DIP SWITCH